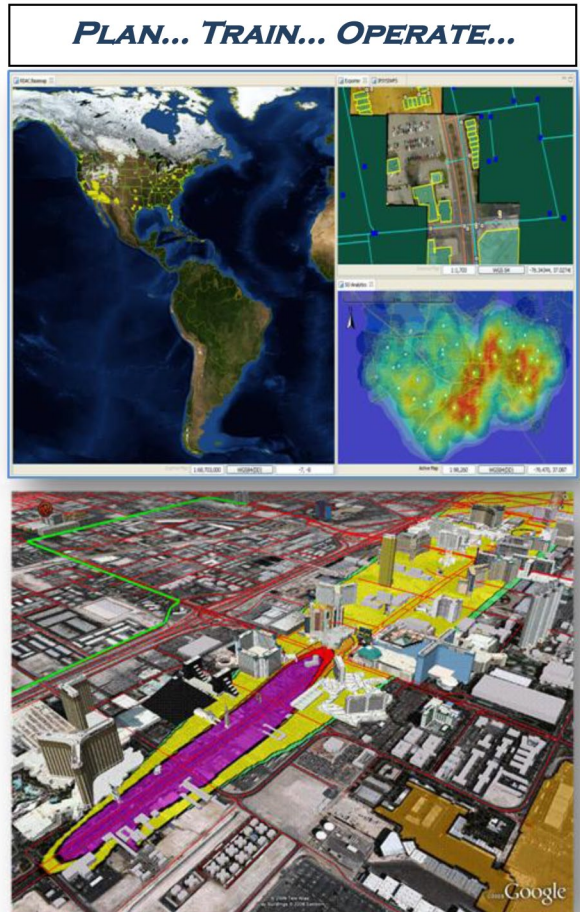


EXECUTIVE SUMMARY: RDAC™

The Rapid Dynamic Analytical Capability (RDAC™) is a dynamic, high-speed analytical application capable of performing rapid, real-time, geospatial data analysis. RDAC™ can provide critical analysis in 2D / 3D environments via stand-alone or distributed and scale-able geospatial architectures.

Why RDAC™?

- *No need for multiple feeds, systems, and monitors – RDAC™ generates an analytical feed to and from a Common Operating Picture or Simulation*
- *No need to go hunting for multiple sources of geospatial data - Use your own and/or supplement it where needed with Immersive Solutions own multiple layers*
- *No costly integration - it slots right into your existing architecture - Integrates with existing HLS/HLD model and simulation systems*
- *It's the ONLY system that provides “on-the-fly” Level Of Effect (LOE) reporting. In other words, model layer by layer effects of a disaster as it unfolds*
- *Identifies Critical Infrastructure and key resource deficiencies and provides a platform for predictive or actual damage, threat, and vulnerability assessment analytics*



Integrating your own data with thousands of data layers of its own, RDAC™ is able to dynamically assess or simulate the effects of a disaster - in real-time if necessary. RDAC™ is designed to directly support Training, Experimentation, and Emergency & First Responders.



Contact: info@immersivesolutions.com

3101 American Legion Road
Chesapeake, Virginia 23321
(757) 373-1958